

ALL THE POSSIBILITIES ARE HERE



 **أسيا فيكس للخدمات الفنية**  
**ASIAN FIX TECHNICAL SERVICES**

# OUR SERVICES

## AIR CONDITIONING

- ✓ Central Air Conditioning
- ✓ Split Air Conditioning
- ✓ Window Air Conditioning
- ✓ Portable Air Conditioning
- ✓ Ductless Mini-Split A/C
- ✓ Packaged Air Conditioning
- ✓ Evaporative Cooling
- ✓ Geothermal Cooling
- ✓ Hybrid Air Conditioning

## ELECTRICAL

- ✓ Electrical Wiring
- ✓ Electrical Repairs
- ✓ Electrical Upgrades
- ✓ Lighting Installation
- ✓ Cable Insulation
- ✓ Electrical Panel Installation
- ✓ DB Box Installation
- ✓ Electrical System Installation
- ✓ Electrical Maintenance

## PLUMBING

- ✓ Water Supply Systems
- ✓ Drainage Systems
- ✓ Plumbing Fixtures
- ✓ Pipe Repair & Replacement
- ✓ Water Heater Installation
- ✓ Back-flow Prevention
- ✓ Plumbing Inspections
- ✓ Water Tank Installation
- ✓ Plumbing Maintenance

## PAINTING

- ✓ Interior Painting
- ✓ Exterior Painting
- ✓ Residential Painting
- ✓ Commercial Painting
- ✓ Industrial Painting
- ✓ Surface Preparation
- ✓ Specialty Finishes
- ✓ Cabinet Refinishing
- ✓ Wallpaper Fixing
- ✓ Paint Maintenance

## GYPSUM & DECOR

- ✓ Gypsum Board Installation
- ✓ Gypsum Partition Walls
- ✓ Gypsum Ceiling Installation
- ✓ Gypsum Moulding & Cornices
- ✓ Gypsum Archways & Columns
- ✓ Gypsum Decorative Panels
- ✓ Gypsum False Ceilings
- ✓ Gypsum Cove Lighting
- ✓ Gypsum Wall Finishes
- ✓ Gypsum Fireproofing

## INTERLOCK

- ✓ Driveway Interlocking
- ✓ Walkway and Path Interlocking
- ✓ Patio and Deck Interlocking
- ✓ Pool Deck Interlocking
- ✓ Garden and Landscape Interlocking
- ✓ Commercial Interlocking
- ✓ Patterned Interlocking
- ✓ Interlocking Repairs & Maintenance
- ✓ Interlock works proper planning

## TILES

- ✓ Floor Tile Installation
- ✓ Wall Tile Installation
- ✓ Backs-plash Tile Installation
- ✓ Tile Repair and Replacement
- ✓ Tile Grouting
- ✓ Tile Sealing
- ✓ Tile Restoration
- ✓ Tile Patterns and Designs
- ✓ Outdoor Tile Installation
- ✓ Tile Maintenance

## PLASTER

- ✓ Interior Plastering
- ✓ Exterior Plastering (Stucco)
- ✓ Decorative Plaster Moulding
- ✓ Skim Coating
- ✓ Plaster Patching and Repair
- ✓ Plaster Sculpting
- ✓ Plaster Ceiling Restoration
- ✓ Plaster Fireproofing
- ✓ Plaster Texturing
- ✓ Plaster Removal

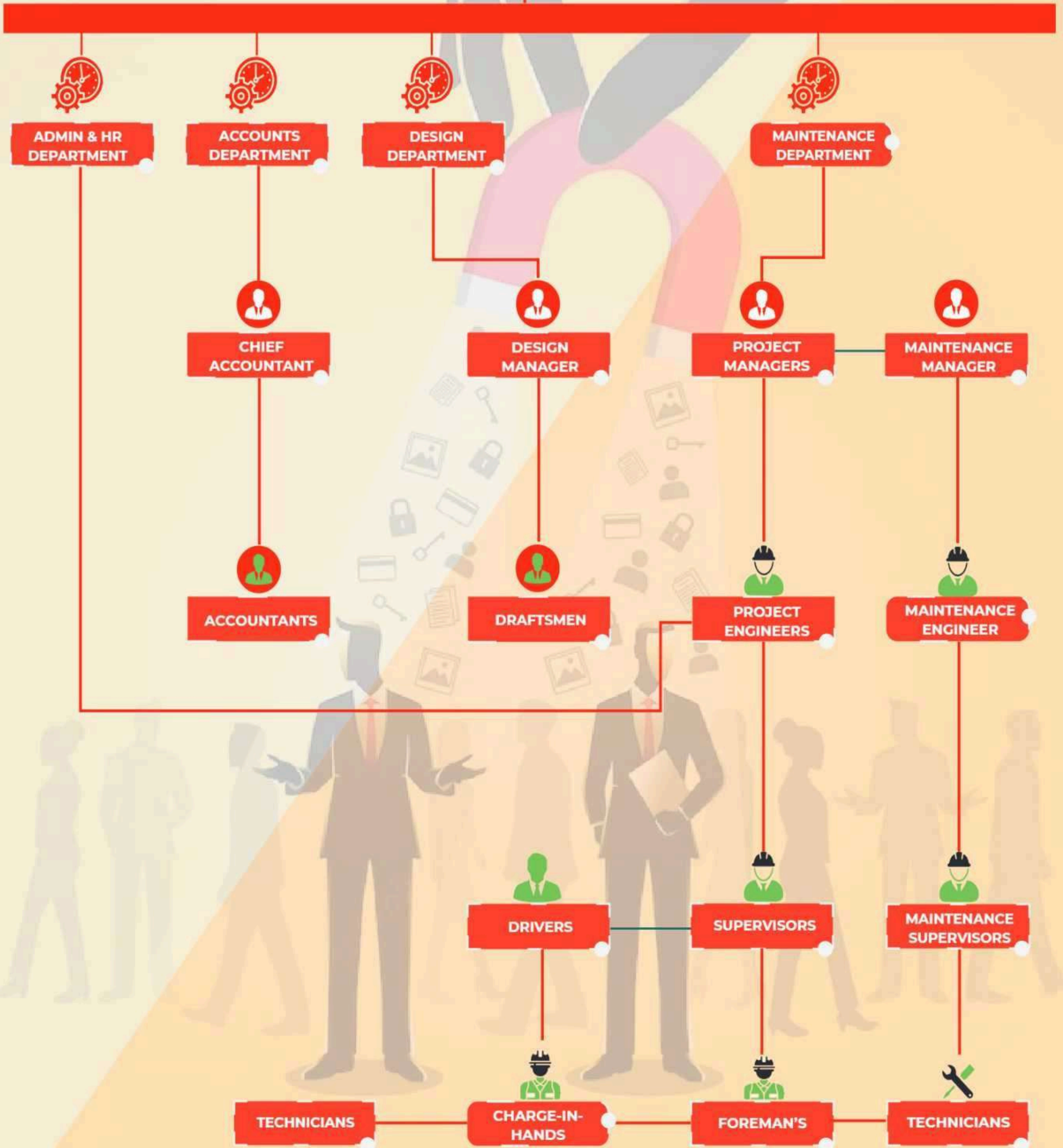
## PACKAGING

- ✓ General Packaging Labor
- ✓ Machine Operators
- ✓ Warehouse Packers
- ✓ Food & Hygiene Packaging
- ✓ Industrial Packaging Workers
- ✓ Supervisory & Skilled Staff

# - TEAM



**MANAGING DIRECTOR**



**YOUR TRUSTED  
PARTNER  
IN TECHNICAL  
SERVICES**



**أسيافيكس للخدمات الفنية  
ASIAN FIX TECHNICAL SERVICES**

# AIR CONDITIONING

## **Air conditioning and piping installation, maintenance and repair**

Air conditioners have come a long way since their invention by Willis Carrier almost a century ago, and modern systems are fully capable of keeping homes cool even in the hottest summers. Of course, to keep your air conditioner running well, you'll need to have it professionally serviced. At Ambient Edge, we're proud to be your local AC installation and service experts, and we're always working to provide even more efficient cooling to our customers.

### **Repair and Service**

AC Repair Even a well-installed air conditioner may run into trouble at any time, and those issues can be a major inconvenience for you and your family. Fortunately, at Ambient Edge, we're here to work around your busy schedule and keep your cooling system up and running no matter what. We offer flexible hours for non-emergency air conditioning repairs along with 24-hour emergency service. Our straightforward pricing system means you'll never be surprised by repair costs, and if the problem is severe enough to warrant a replacement system, we'll work with you to find the best possible fit for your family.

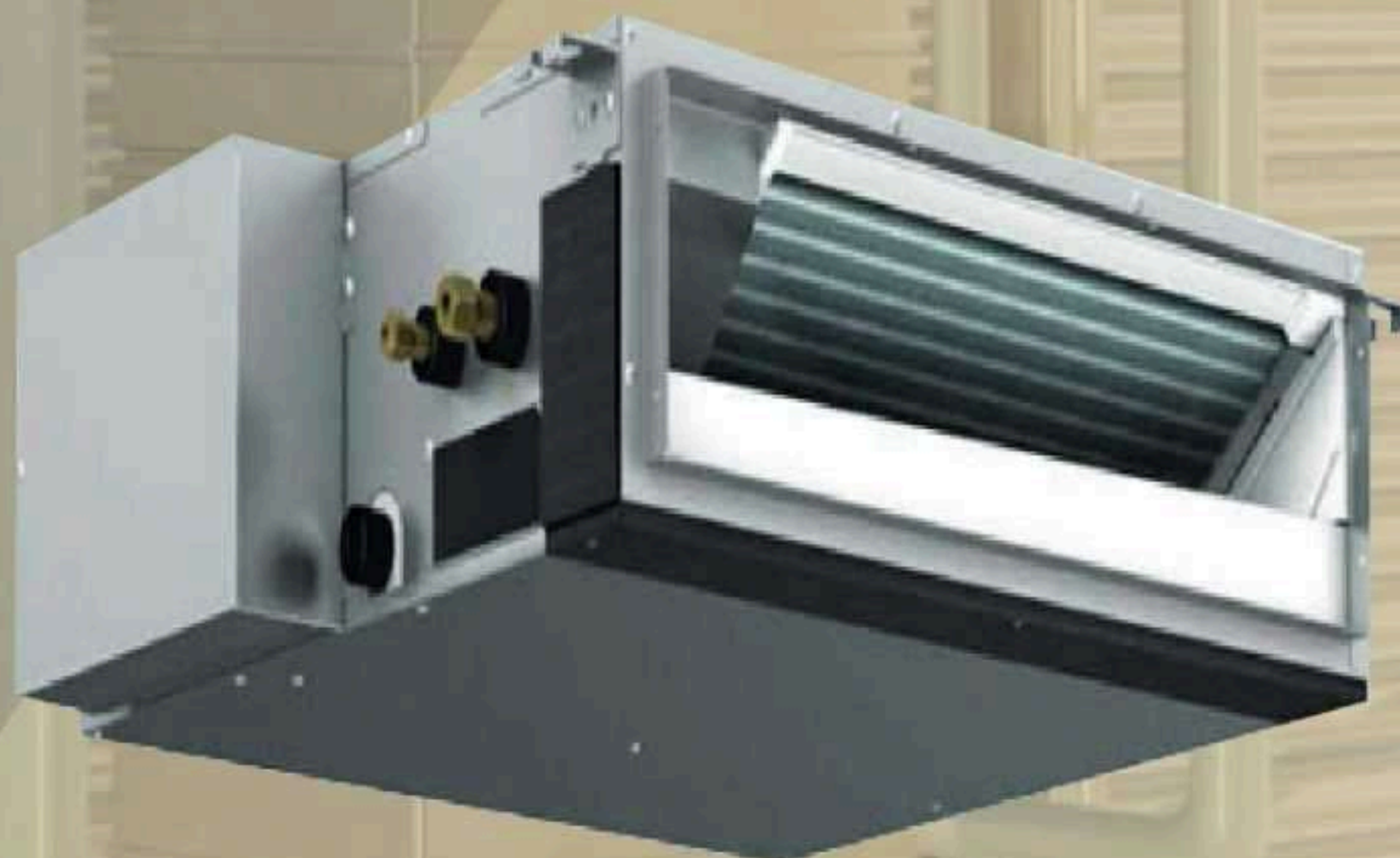
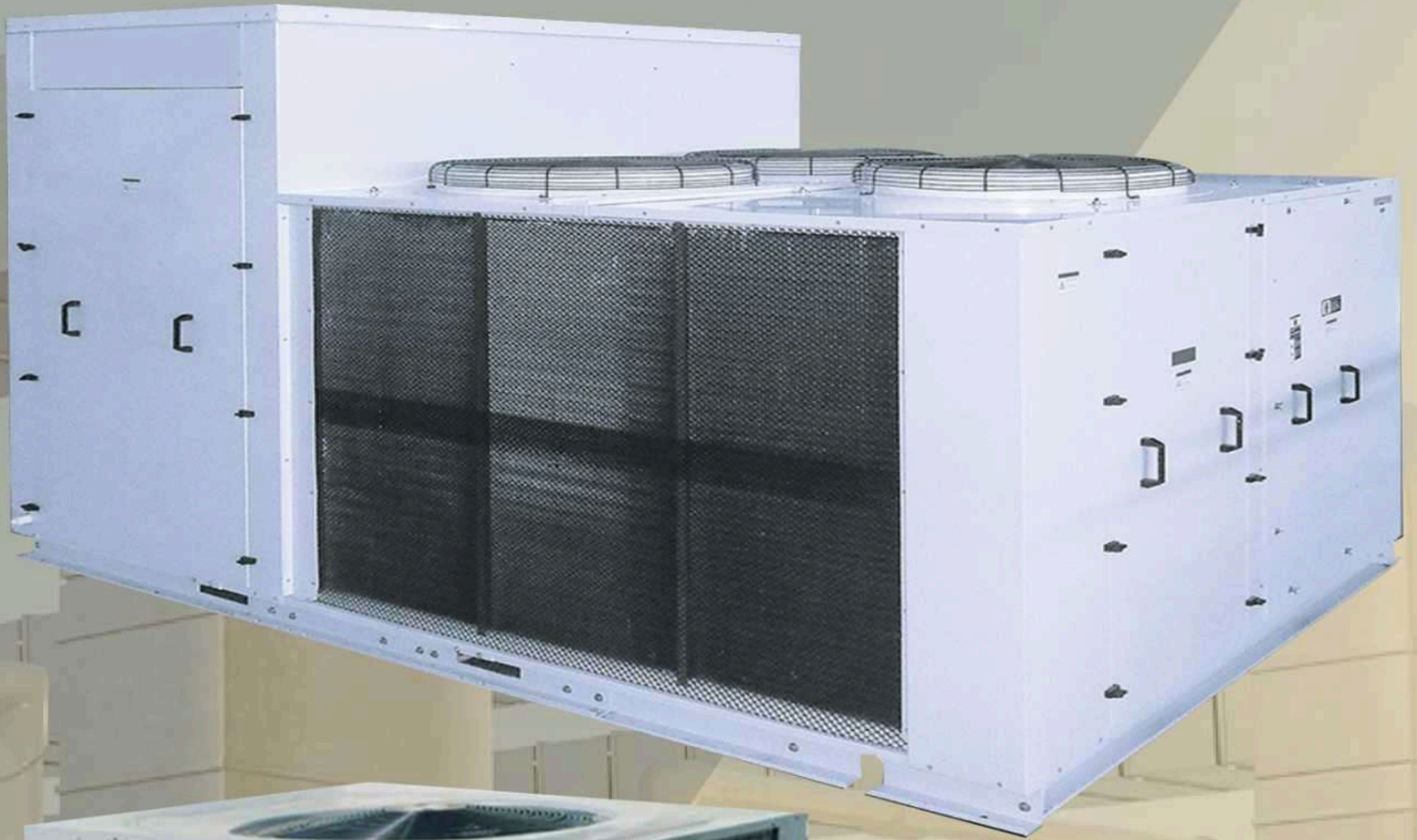
### **Installation and Sales**

Heating Repair In our many years in the HVAC industry, we've noticed that two of the most common causes of air conditioning issues are over- and under-sizing. Undersized systems endure extra wear and tear as they struggle to keep the home cool, leading to a host of maintenance issues and a shorter lifespan. Things don't get much better with a system that's too large; it will constantly cycle on and off, causing uncomfortable temperature changes and wasting energy. We head off both of those problems by starting every AC installation project with a load calculation, which accounts for square footage, layout and insulation to determine your home's exact cooling needs.

Once we've helped you choose an air conditioner or heat pump that's sized precisely to meet your home's needs, our installation team will work diligently to get it up and running in your home. We know the manufacturer's specifications as well as state and local building codes inside and out, and we always treat those standards as an absolute minimum. Our goal is to set you up for high-quality, high-efficiency cooling for many years to come.



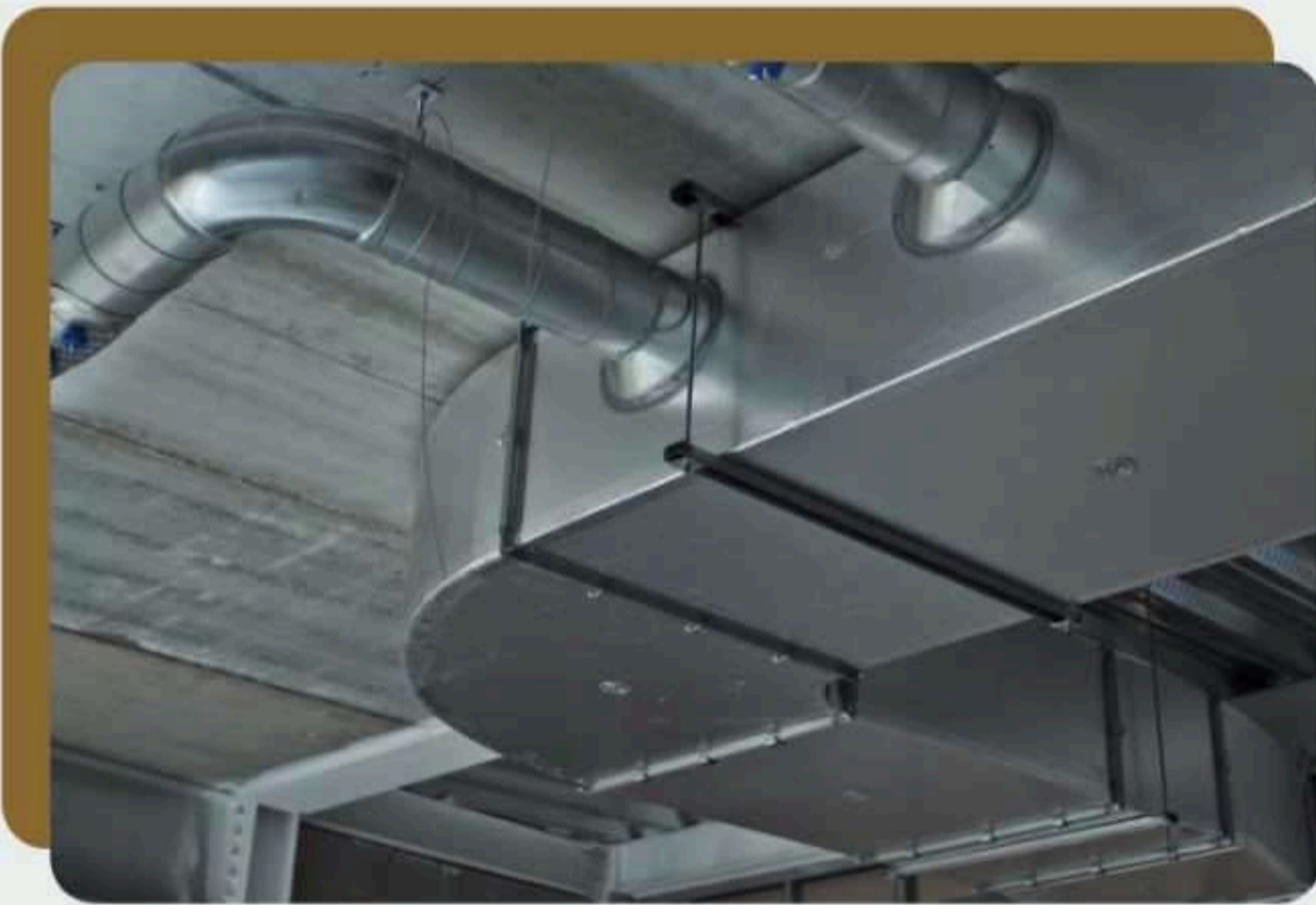
# AIR CONDITIONING



**COMPLETED**

**A/C & DUCT**

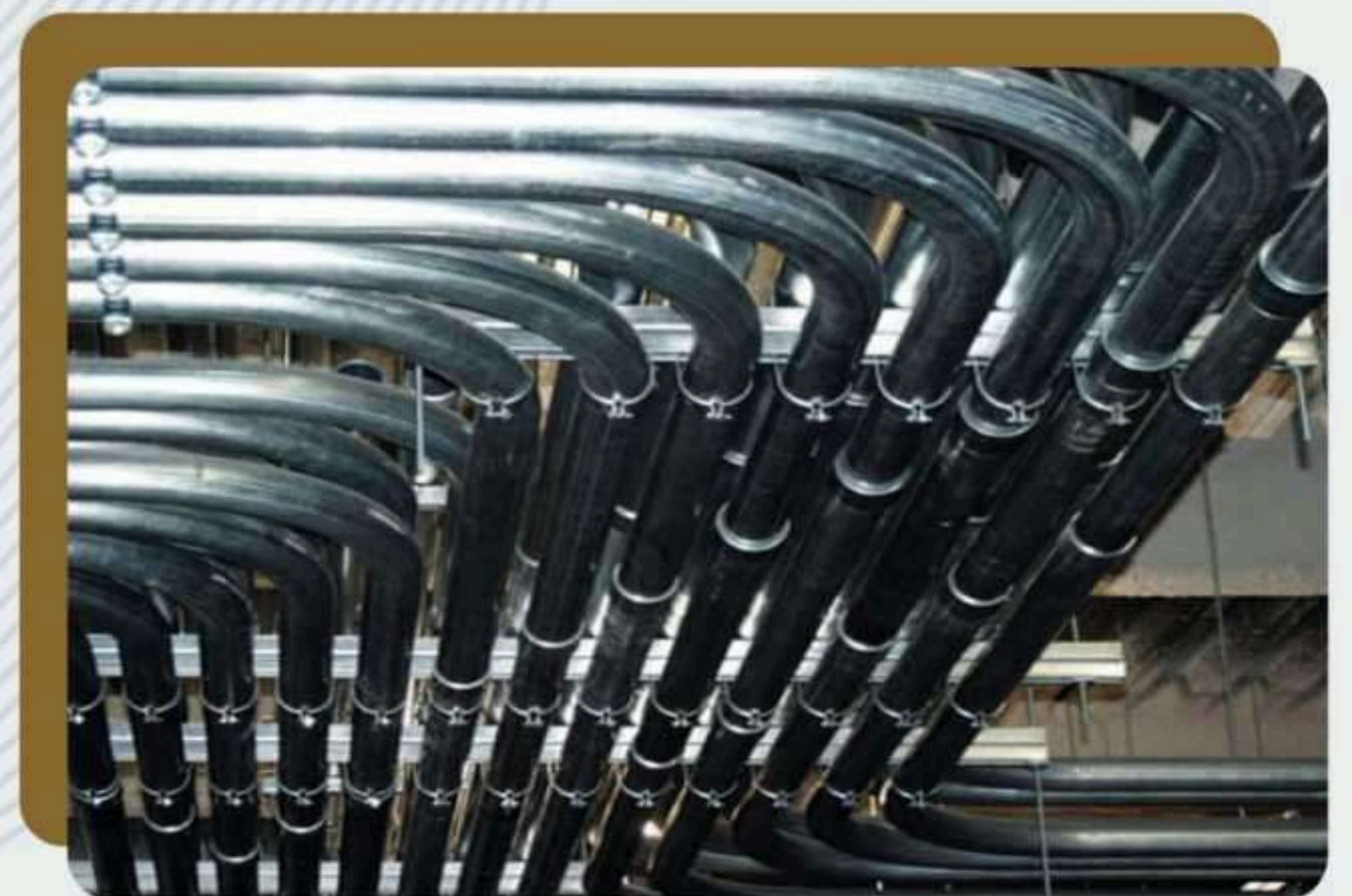
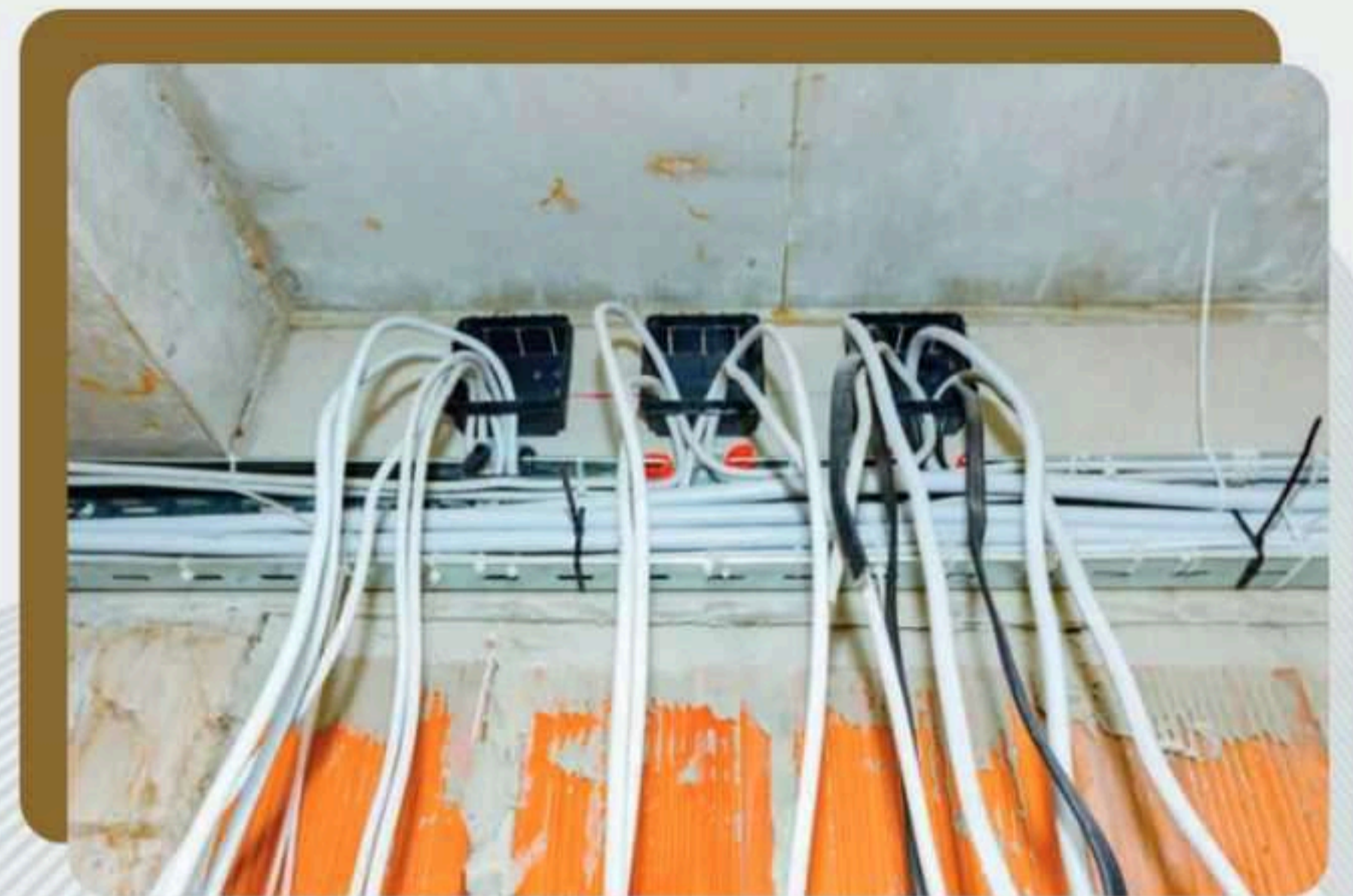
**PROJECTS**



**COMPLETED**

**ELECTRICAL WORKS**

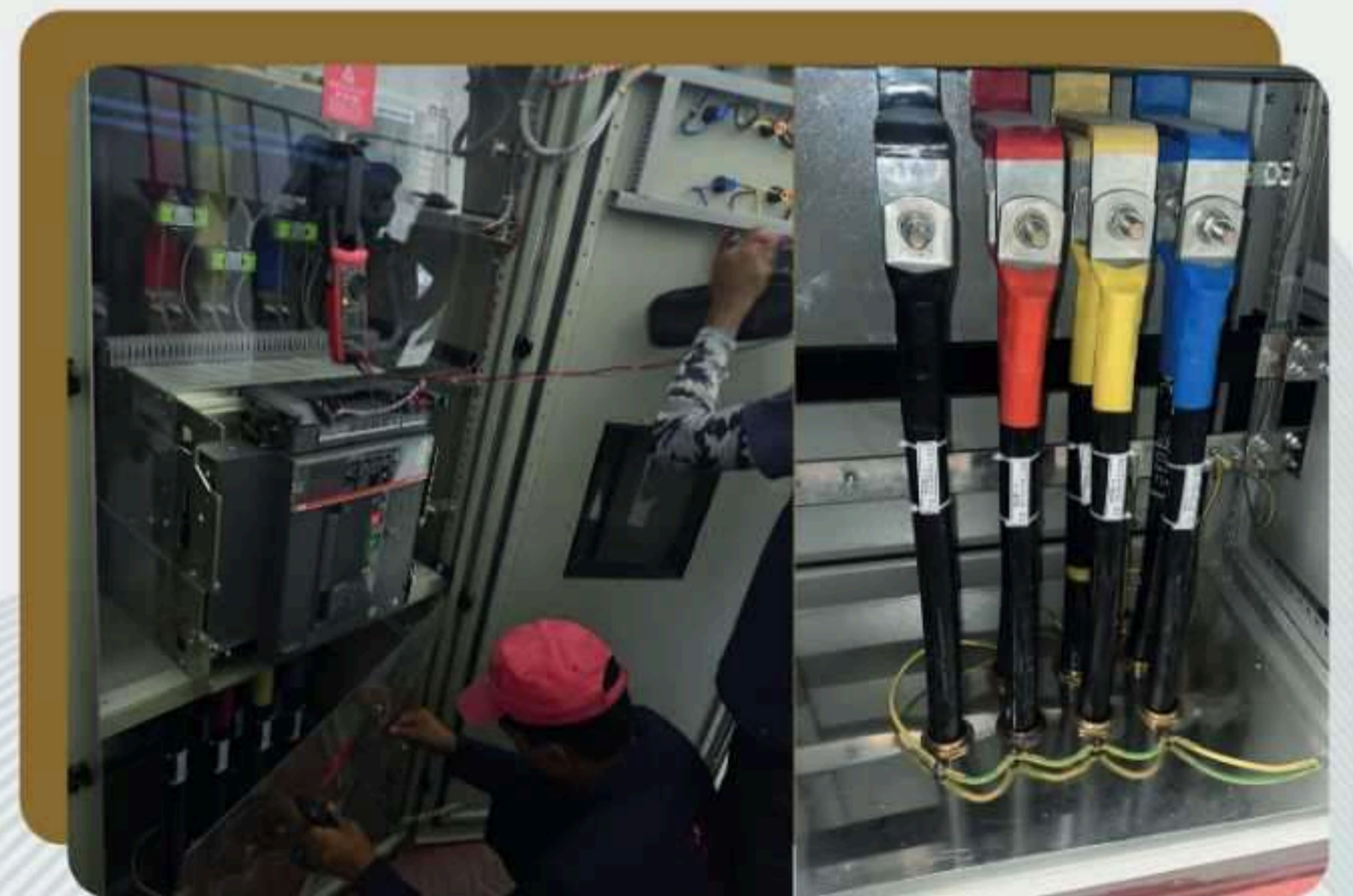
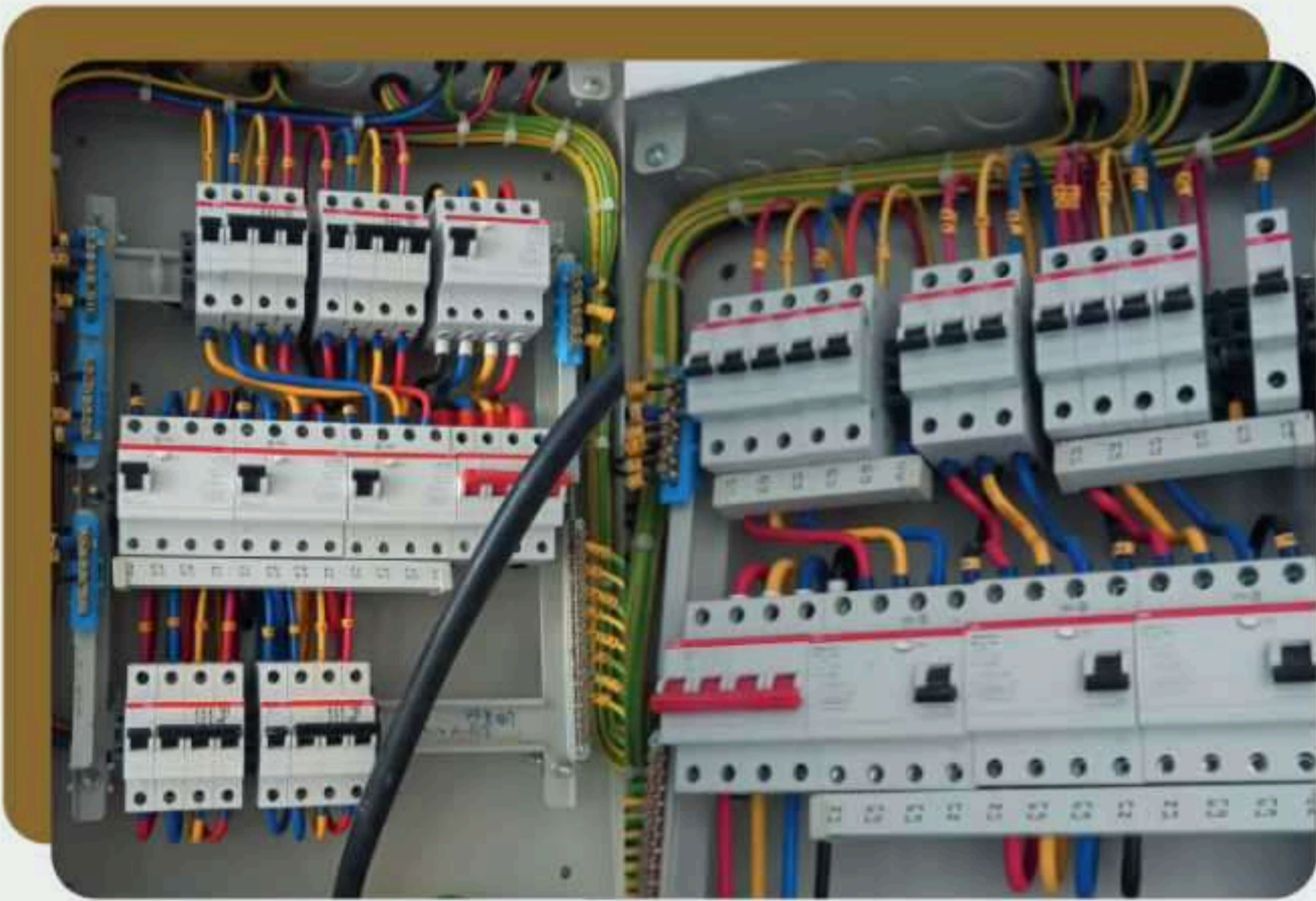
**PROJECTS**



**COMPLETED**

**ELECTRICAL WORKS**

**PROJECTS**



# PLUMBING

## Sanitary ware installation, maintenance and repair

Our expert plumbers are on hand to assist with all your plumbing maintenance, repair and installation requirements. Well designed and properly maintained plumbing and sanitary systems are very important for every villa, apartment and commercial place. Clean water flowing into the home, drainage for excess water and waste disposal are all crucial aspects of a fully functioning plumbing and sanitary system.

Whether you require a complete installation for a new plumbing system or a simple water leak repaired, our team is available to help with all your plumbing requirements and maintenance needs. Bathrooms and kitchens are key areas where you will find the majority of plumbing work. Our experienced plumbers have been trained to deal with all aspects of plumbing work throughout Dubai.

Our plumbing services cover the following areas:

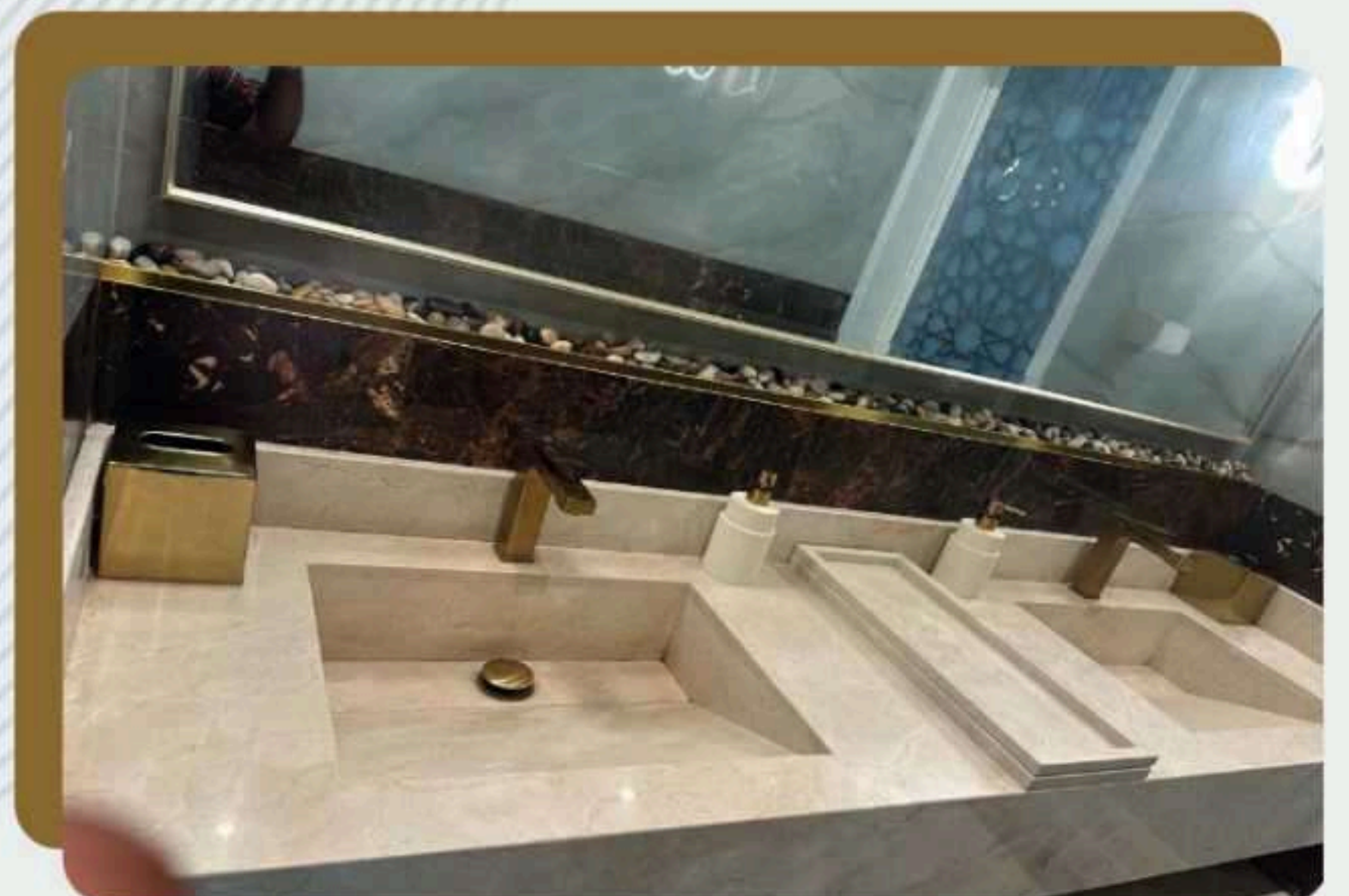
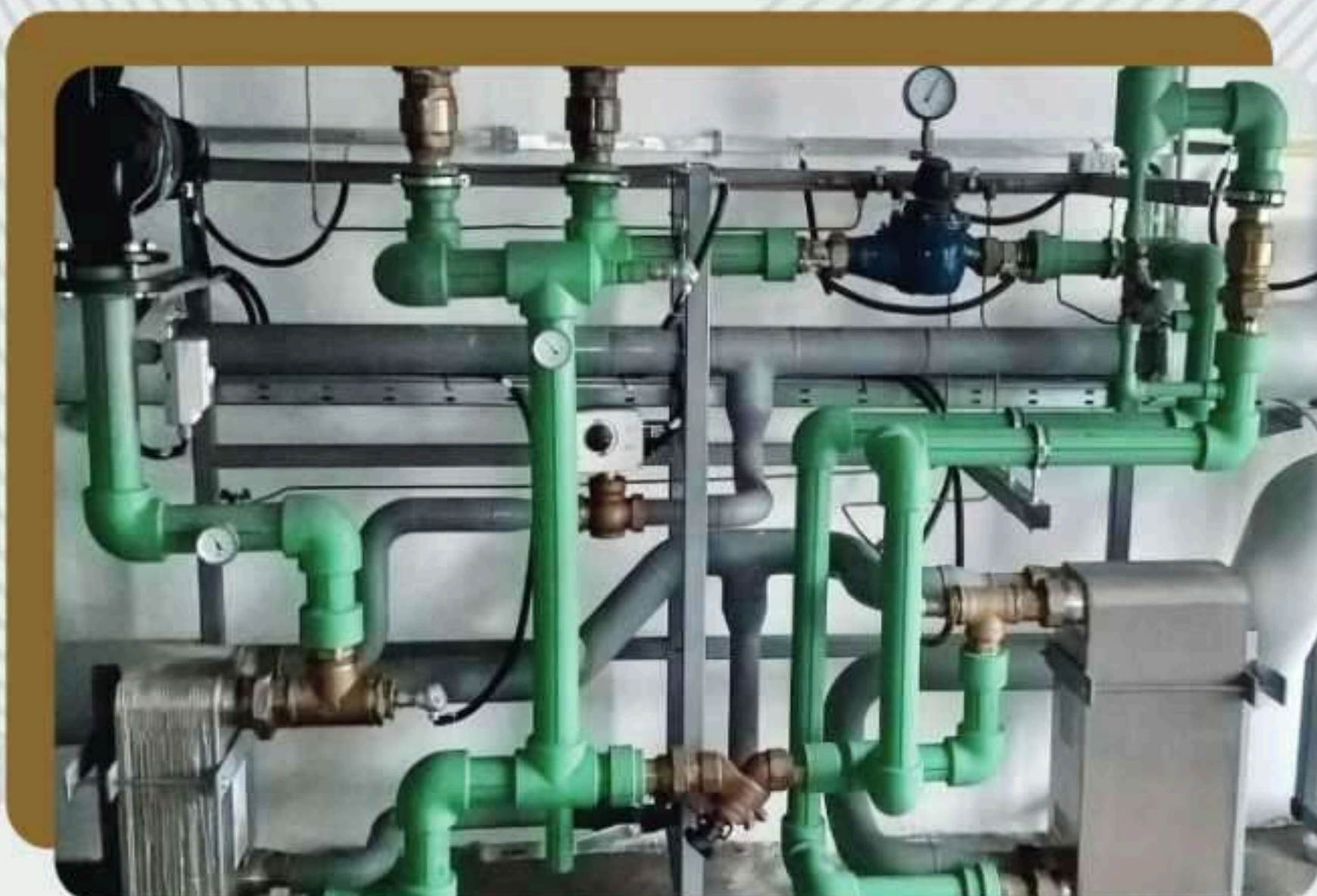
- Bathroom Plumbing and Installation
- Burst Pipes
- Floods and Leaks
- Hot Water Issues
- Kitchen Plumbing and Installation
- Pipework
- Plumbing Installation and Repairs
- Sanitary Ware
- Shower Installation and Repairs
- Taps, Toilets and Showers
- Toilet Installation and Repairs
- Waste Disposals
- Water Heaters
- Water Tanks
- Water Pumps



**COMPLETED**

**PLUMBING WORKS**

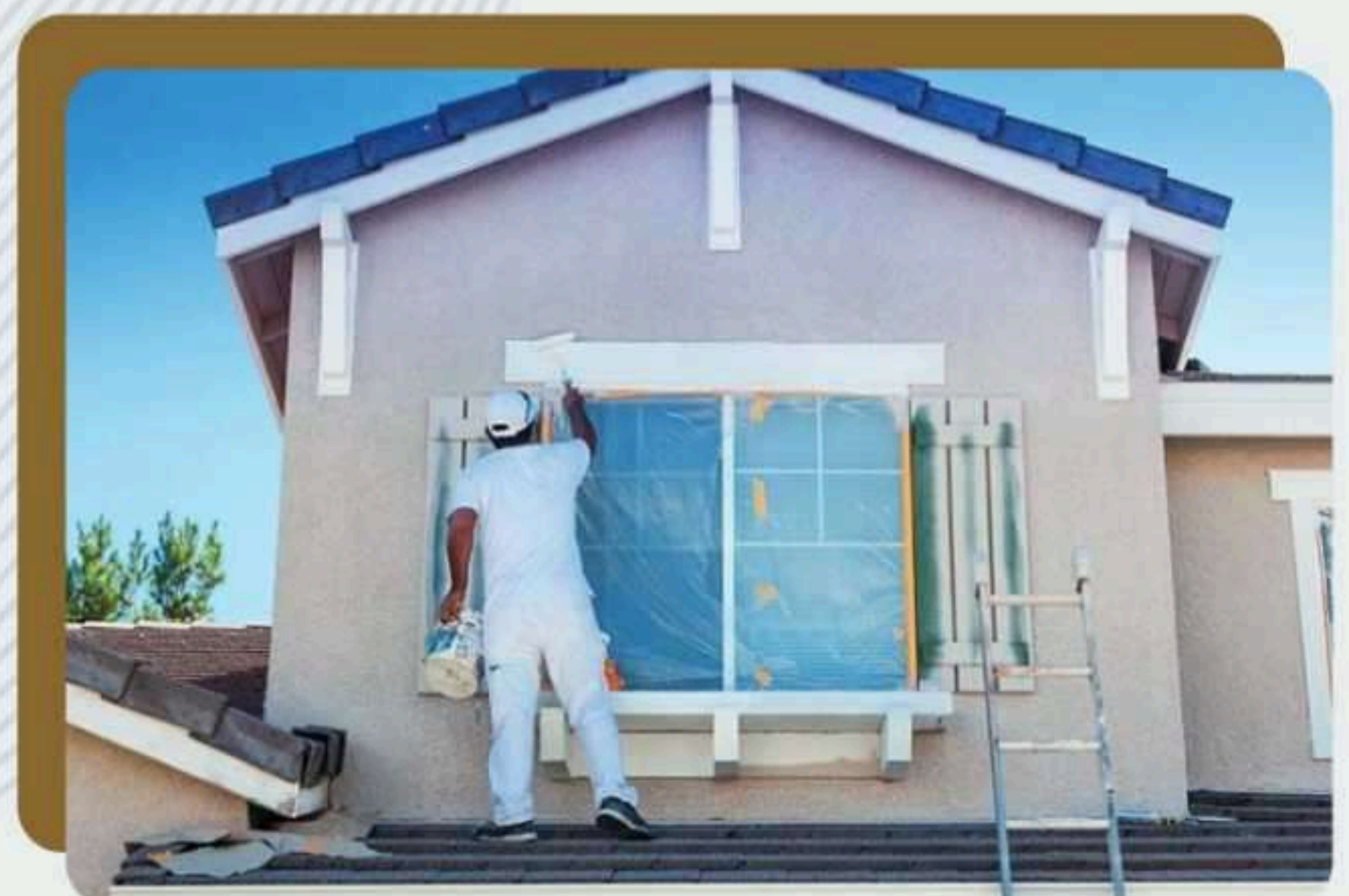
**PROJECTS**



**COMPLETED**

**PAINTING WORKS**

**PROJECTS**



**COMPLETED**

**GYPSUM & DECOR**

**PROJECTS**



**COMPLETED**

**INTERLOCK & FLOOR STONE**

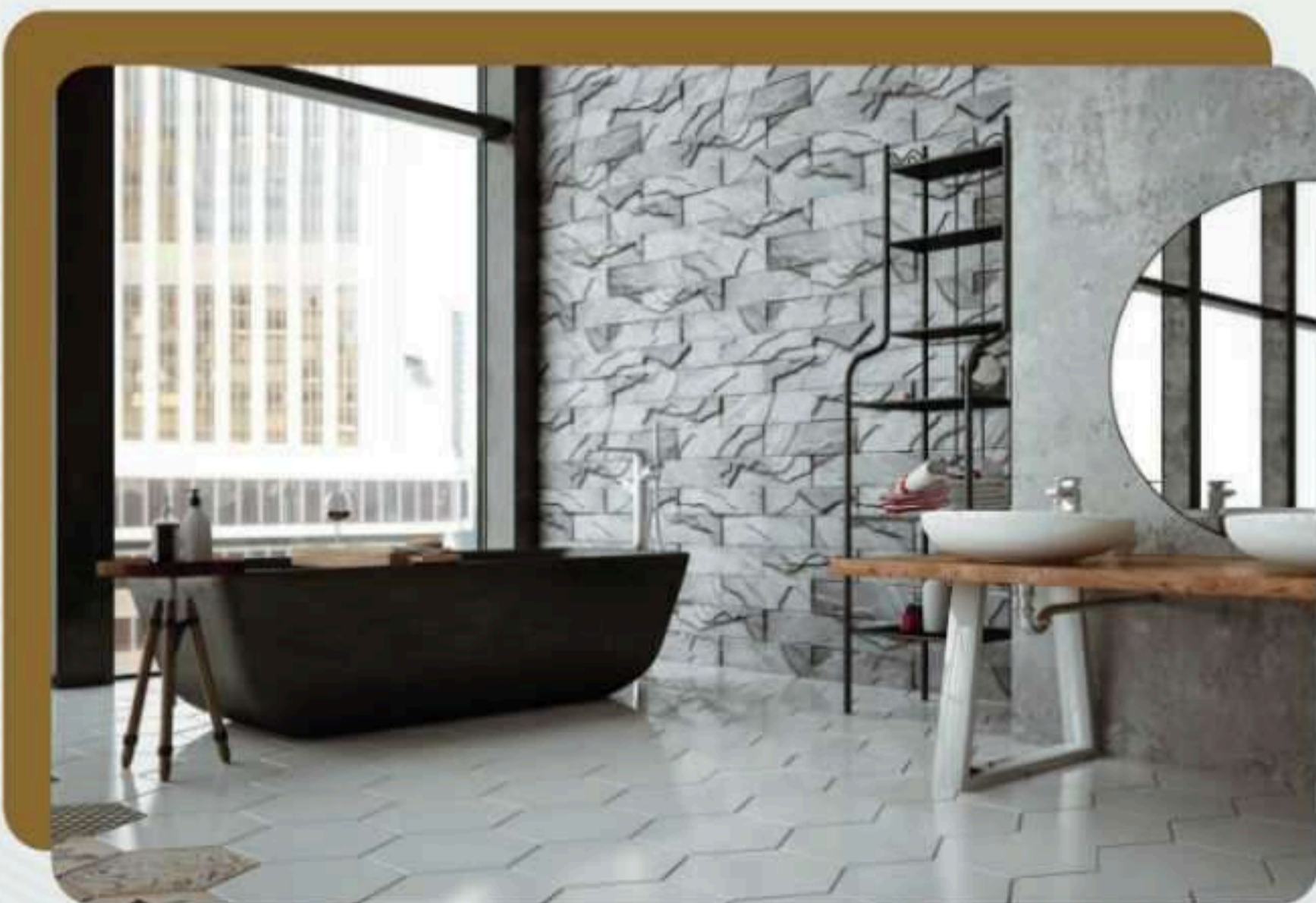
**PROJECTS**



**COMPLETED**

**TILES**

**PROJECTS**



**COMPLETED**

**PLASTER WORKS**

**PROJECTS**



# BUILDING MAINTENANCE

## Building Maintenance Services

The required work from contractors under this General Bid Slate is providing maintenance services for the following types of buildings:

- Industrial Buildings (Offices, Warehouses, Security gates, Maintenance Shops, Plant buildings)
- Residential Buildings
- IT Buildings (Data Rooms etc.)



## Camp Services

The required work from contractors under this General Bid Slate covers the following:

- Camp Administration Services
- Housing Operations
- Recreation & Janitorial Operations
- Maintenance, Utilities & Plant Operations
- Food Services
- Gardening, Sanitation & Pest Control
- Concession Services
- Others (Furniture Warehouse, Mail Sorting )
- Remote Area Camp Management



**COMPLETED**

**GENERAL MAINTENANCE**

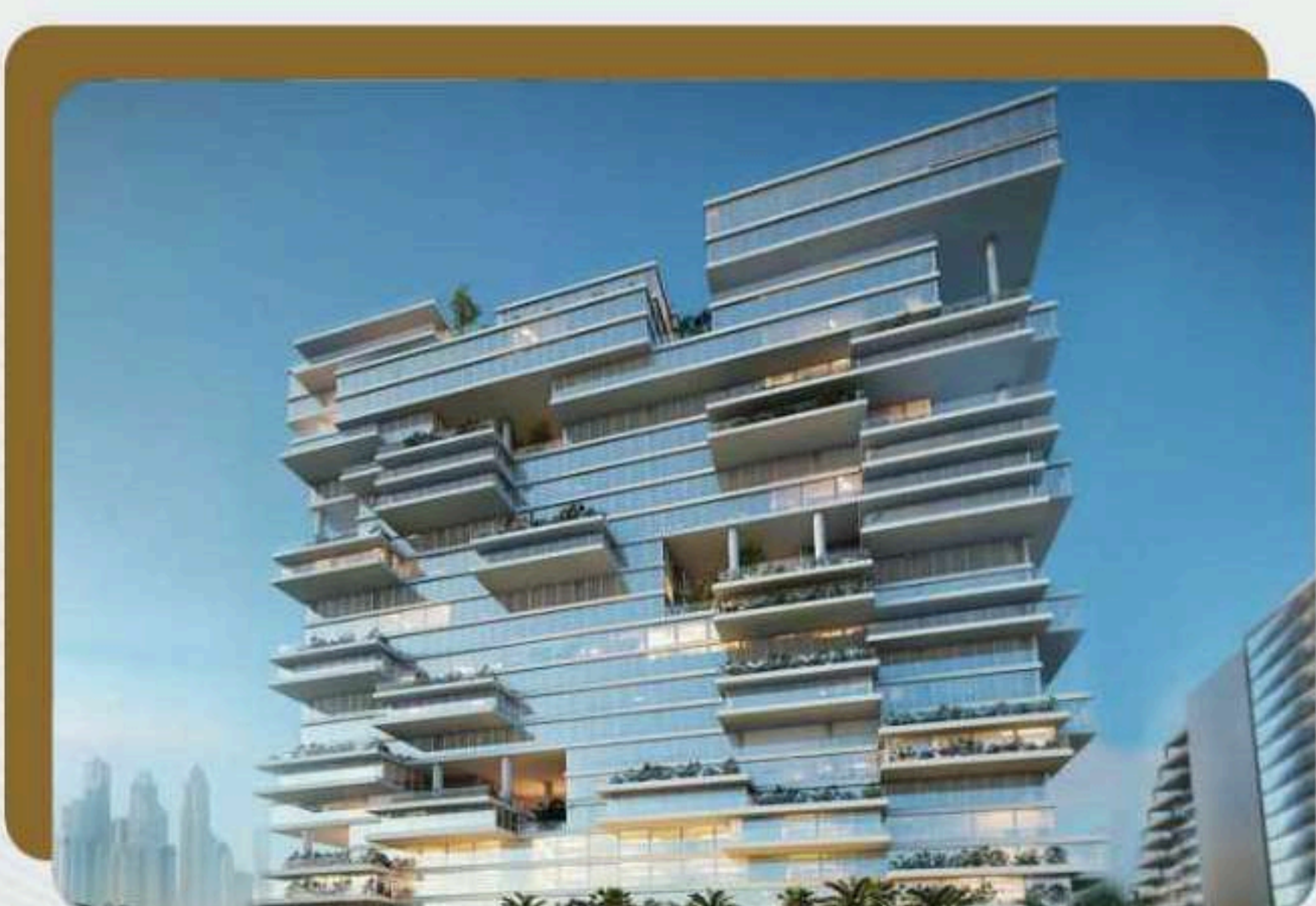
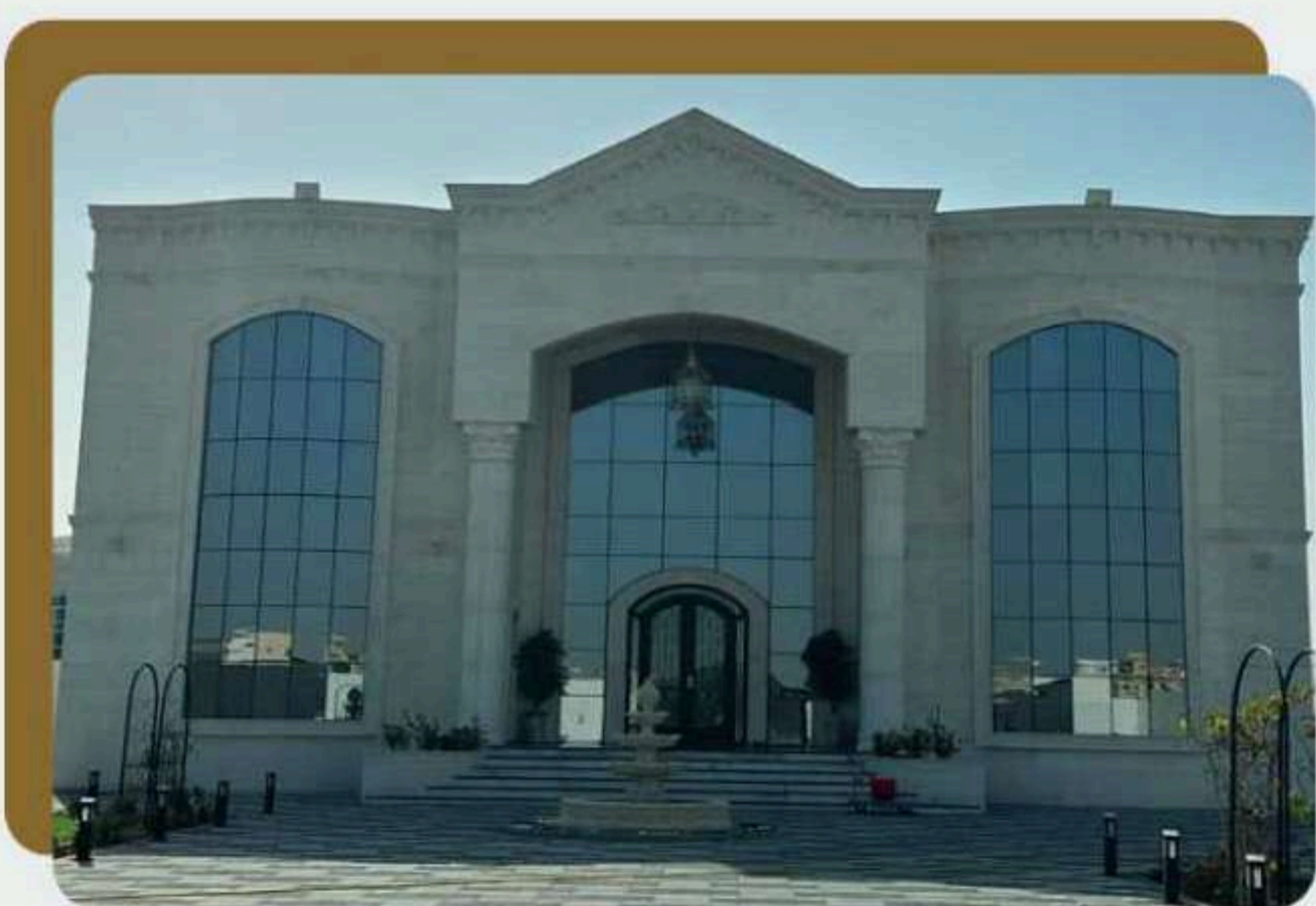
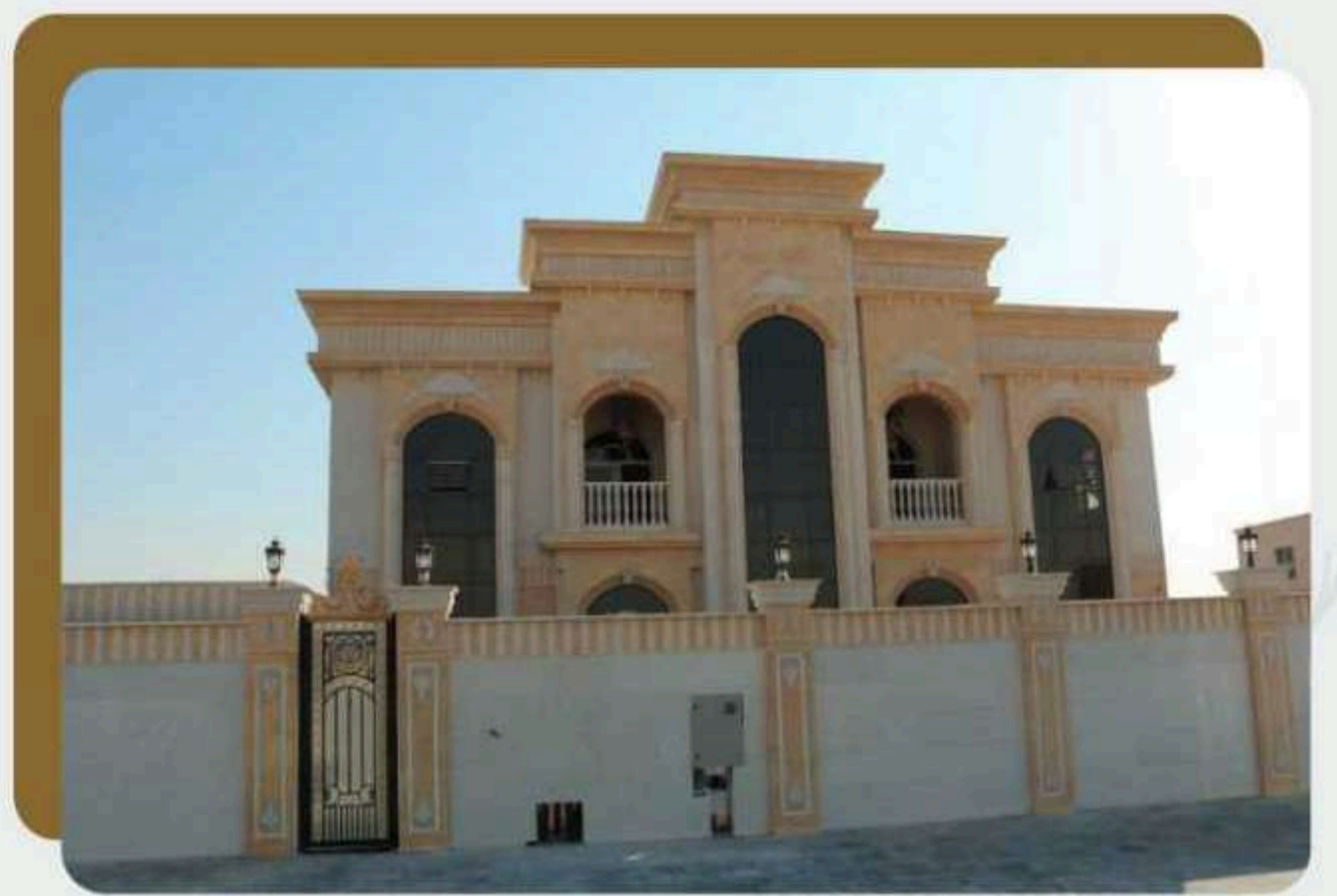
**PROJECTS**



**COMPLETED**

**VILLA WORKS**

**PROJECTS**



# PACKAGING WORKER SUPPLY

We provide skilled and semi-skilled packaging workers across a range of industries to meet diverse operational needs. Our workforce is trained to handle different types of packaging processes, ensuring efficiency, safety, and quality at every stage. Whether it's manual labor or machine-assisted tasks, our teams are equipped to support production lines, warehouses, and distribution centers.

Our supply categories include:

- **General Packaging Labor** – Manual packing, labeling, sealing, and box preparation.
- **Machine Operators** – Experienced staff for handling wrapping, labeling, and sealing machines.
- **Warehouse Packers** – Professionals for sorting, palletizing, and dispatch-ready packaging.
- **Food & Clean Packaging** – Hygienic and compliant workers for food, medical, or sanitary packaging.
- **Heavy-Duty & Industrial Packaging** – Skilled workers for industrial materials, equipment packaging, and bulk handling.
- **Supervisory Staff** – Packaging team leaders, QC assistants, and shift supervisors.



## QUALITY STANDARDS OF UAE MOST TRUSTED SERVICES

**Compliance:** We adhere to all relevant industry regulations, standards, and legal requirements to ensure compliance and maintain the highest level of quality in our services.

**Continuous Improvement:** We strive for continuous improvement in our processes, systems, and services. We proactively seek feedback from clients, monitor performance metrics, and implement corrective actions to enhance the quality of our deliverables.

**Skilled Workforce:** We invest in recruiting, training, and retaining a skilled and knowledgeable workforce. Our employees undergo regular training and professional development to stay up-to-date with the latest industry practices and technologies.

**Quality Control:** We have robust quality control measures in place to monitor and assess the quality of our work. Through rigorous inspections, testing, and documentation, we ensure that our deliverables meet or exceed the specified quality standards.

**Supplier Management:** We work closely with trusted suppliers and subcontractors who share our commitment to quality. We maintain strong relationships with our suppliers, conduct regular evaluations, and ensure that they adhere to our quality standards.

**Customer Feedback:** We value customer feedback and actively seek input from our clients. We use this feedback to measure customer satisfaction, identify areas for improvement, and make necessary adjustments to meet or exceed customer expectations.

**Documentation and Record-Keeping:** We maintain comprehensive documentation and records throughout the project lifecycle. This includes project plans, specifications, test results, and other relevant documentation to ensure transparency, traceability, and accountability.

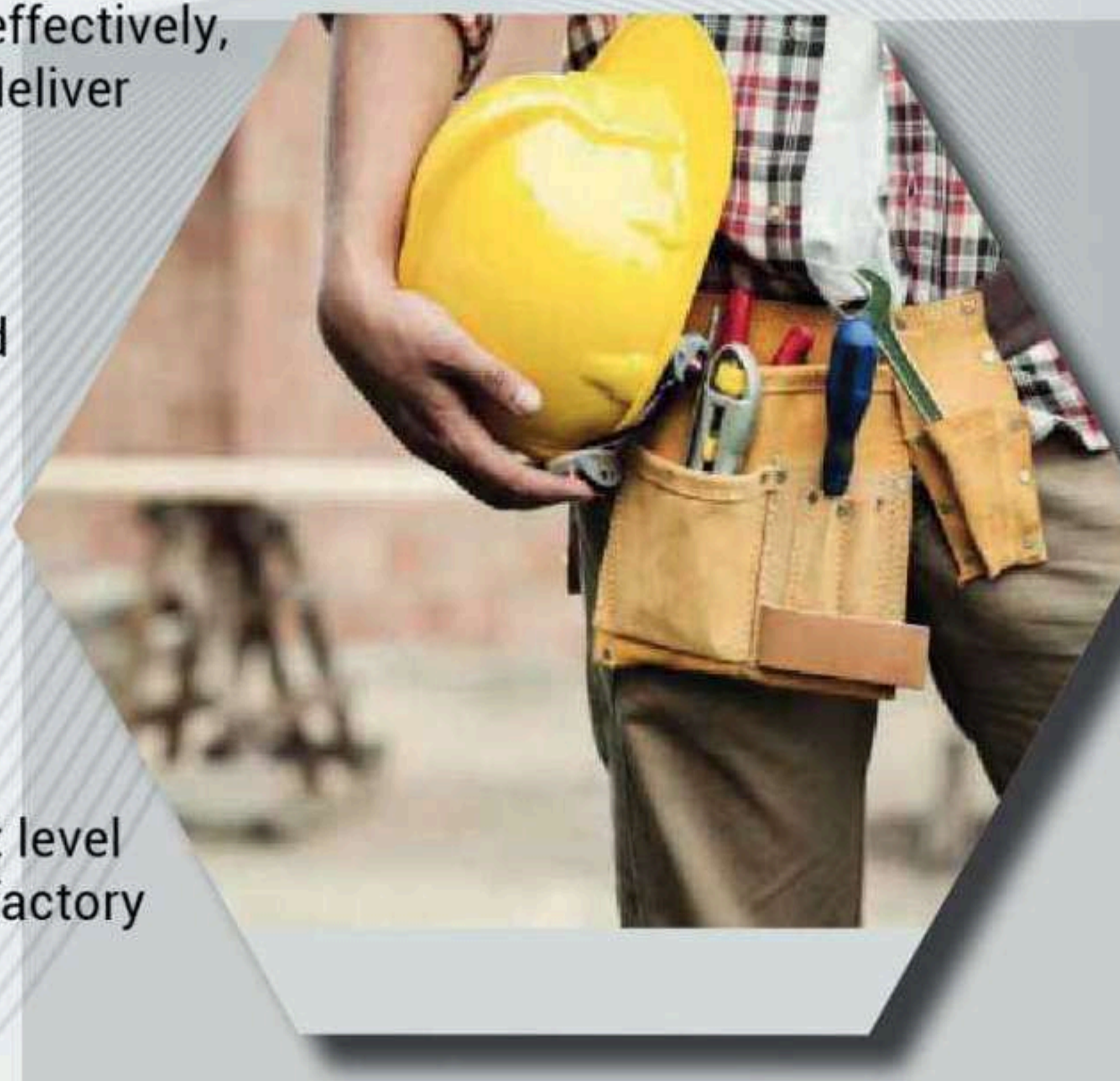
**Risk Management:** We identify and assess potential risks to quality and implement effective risk management strategies. We proactively address risks, implement preventive measures, and have contingency plans in place to mitigate any adverse effects on the quality of our services.

**Customer-centric Approach:** We prioritize the needs and requirements of our customers. We actively engage with clients, communicate effectively, and tailor our services to meet their specific expectations and deliver the highest level of customer satisfaction.

**Performance Measurement:** We establish key performance indicators (KPIs) and metrics to measure the effectiveness and efficiency of our quality management system

Through regular monitoring and analysis of these metrics, we identify areas for improvement and ensure the consistent delivery of high-quality services.

By adhering to these quality standards, RIGGING AND HEAVY LIFT SERVICES strives to ensure that every project meets the highest level of quality providing our clients with reliable, efficient, and satisfactory outcomes.





*Transforming Visions into Reality*

**Quick**  
SERVICE

**TALK TO US**

+971 543 815535

[info@asianfixtechnical.com](mailto:info@asianfixtechnical.com)



**أسيافيكس للخدمات الفنية**  
**ASIAN FIX TECHNICAL SERVICES**

TRN NO:10509584100003